



LAVA

CONSTRUCTION Handloom Knotted

COMPOSITION Wool & Artsilk

STOCK SIZES (cm) 160 x 230 / 200 x 290 / 250 x 350 / 300 x 400

CUSTOM OPTIONS Custom sizes available

PILE TYPE Cut and loop pile

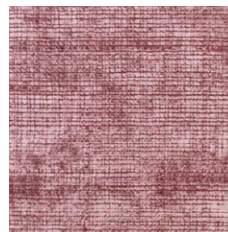
THICKNESS Approx 9-10 mm

FINISH No Carving

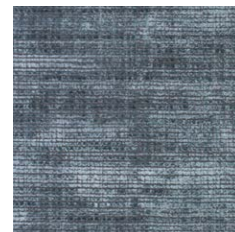
EDGE FINISH Overlocked

USE PURPOSE Indoor

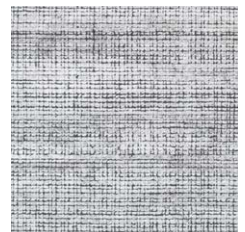
SUITABILITY Residential



RUSSET



TEAL



SILVER

CARE

Vacuum regularly. Clean spills immediately. Never rub a spill, instead blot any liquids with a dry absorbent white cloth or paper towel. Some stains may be cleaned with a mild clear detergent and lukewarm water. If the stain cannot be removed, seek specialist advice. Do not machine wash.

MANUFACTURING VARIATIONS

All rugs are made by hand which means there is a slight chance that variations in size and colour can occur. Up to 5% variation in size and colour is considered acceptable. Variations in pile height and total thickness of 1-2 mm are considered acceptable.

PRODUCT CHARACTERISTICS

SHEDDING Often new rugs begin to produce fluff as a result of loose fibres that remain in the rug after the manufacturing process. Vacuum regularly and this will reduce over time.

SPROUTING Occasionally loose yarn ends will rise above the pile surface. This is a characteristic of this particular weave. Strands can be safely trimmed to the surface when this occurs with a pair of sharp scissors.

SHADING All cut pile rugs are susceptible to exhibit characteristics of shading over time. This is the result of the reversal of pile direction during use causing areas of the rug to appear to have changed colour. This effect is not a manufacturing fault nor can it be prevented.

HEAD OFFICE

THE RUG COLLECTION AUSTRALIA PTY LTD
4/80 Fairbank Road, Clayton South VIC 3169
PH (03) 8555 3584 FAX (03) 8080 6465
sales@therugcollection.com.au

VISIT A TRADE SHOWROOM

MELBOURNE
935 High Street, Armadale VIC 3143
PH (03) 9421 5133

SYDNEY

62-66 Mentmore Avenue, Rosebery NSW 2018
PH (02) 8338 0107