

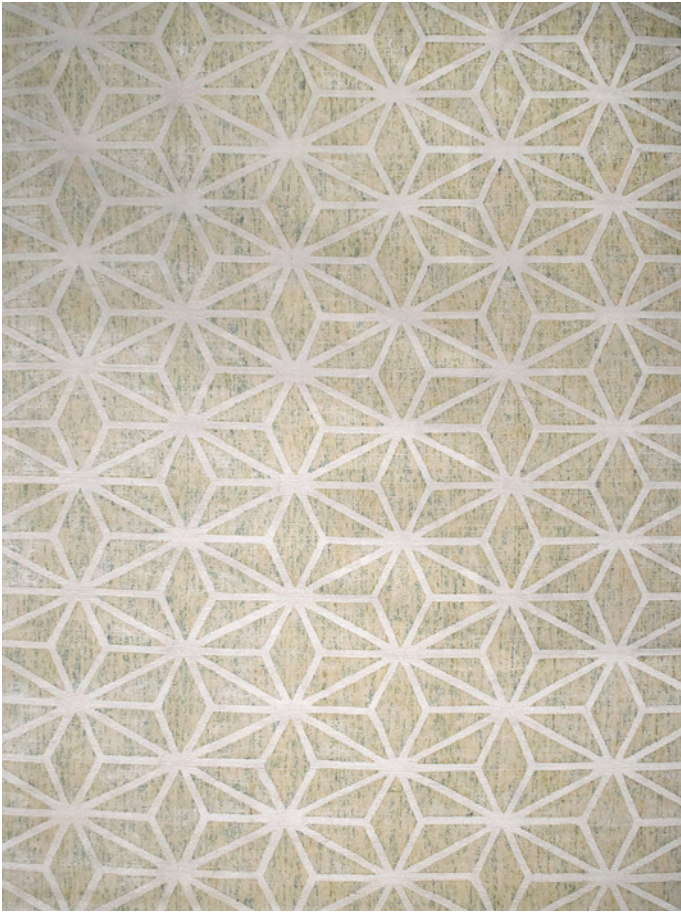
COLLECTION

CALYPSO RUGS
HANDWOVEN
WOOL & ARTSILK

THE **RUG**
COLLECTION
AUSTRALIA

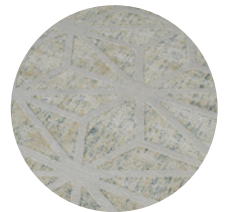
tallira
FURNITURE





CALYPSO RUG

in Autumn



Autumn

Stock Sizes (cm)

200 X 290 / 250 X 350 / 300 X 400

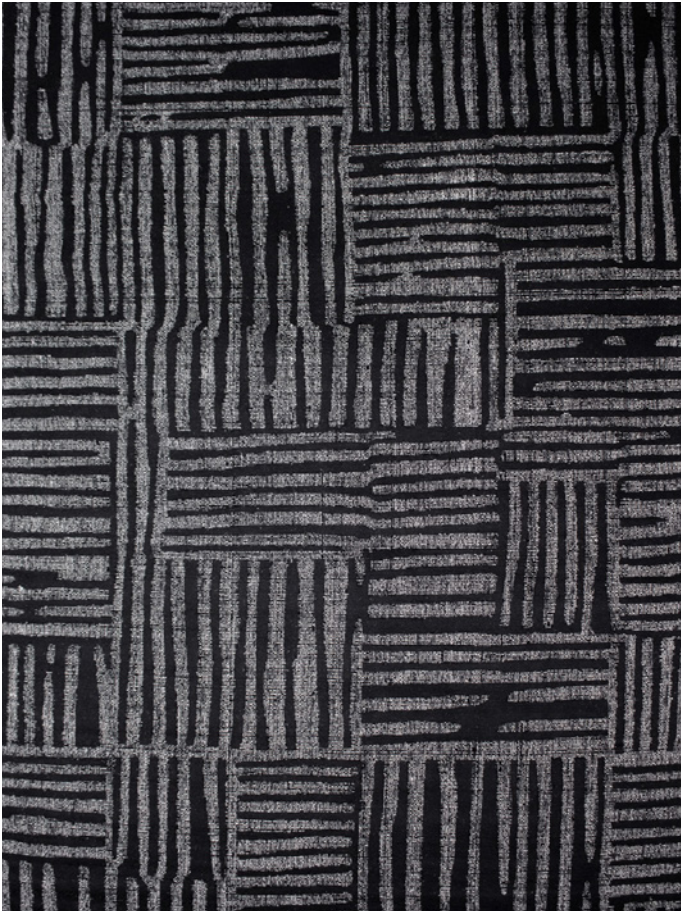
Construction Handwoven
Composition Wool & Artsilk
Custom Options No
Pile Type Cut & loop pile
Thickness Approx 10 mm
Finish No Carving
Edge Finish Overlocked
Use Purpose Indoor
Suitability Residential

[VIEW PRICING](#)

[Log in](#) or [Request a Trade Account](#)

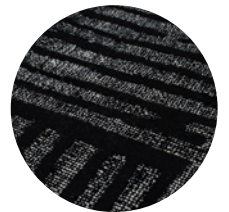


[Visit A Showroom](#)



CALYPSO RUG

in Black



Black

Stock Sizes (cm)

200 X 290 / 250 X 350 / 300 X 400

Construction Handwoven

Composition Wool & Artsilk

Custom Options No

Pile Type Cut & loop pile

Thickness Approx 10 mm

Finish No Carving

Edge Finish Overlocked

Use Purpose Indoor

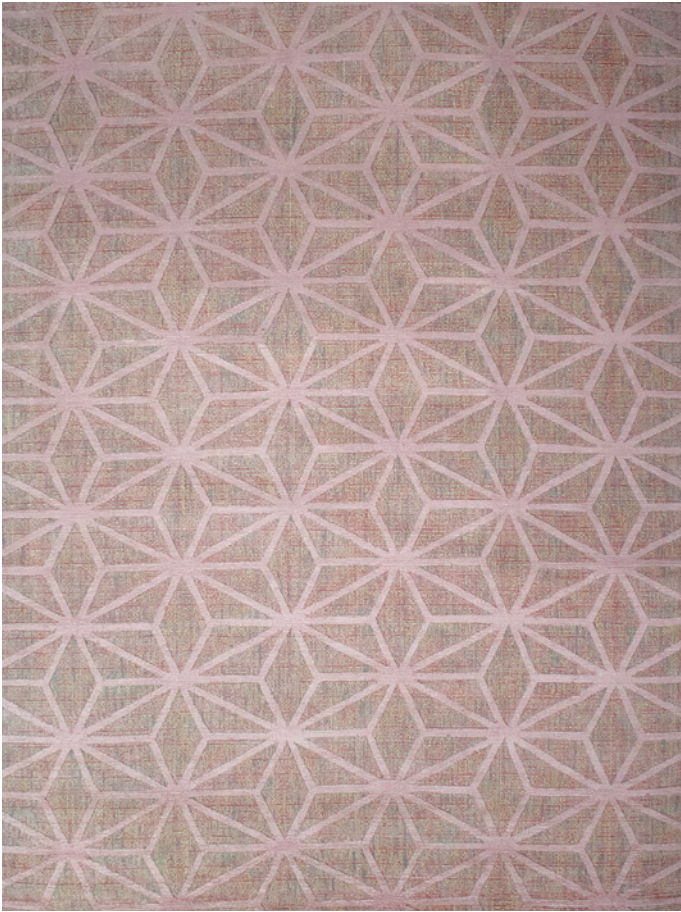
Suitability Residential

[VIEW PRICING](#)

[Log in](#) or [Request a Trade Account](#)



[Visit A Showroom](#)



CALYPSO RUG

in Candy



Candy

Stock Sizes (cm)

200 X 290 / 250 X 350 / 300 X 400

Construction Handwoven
Composition Wool & Artsilk
Custom Options No
Pile Type Cut & loop pile
Thickness Approx 10 mm
Finish No Carving
Edge Finish Overlocked
Use Purpose Indoor
Suitability Residential

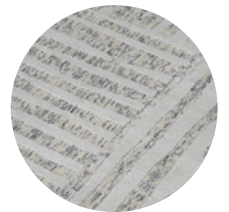
[VIEW PRICING](#)

[Log in](#) or [Request a Trade Account](#)



CALYPSO RUG

in Ivory



Ivory

Stock Sizes (cm)

200 X 290 / 250 X 350 / 300 X 400

Construction Handwoven

Composition Wool & Artsilk

Custom Options No

Pile Type Cut & loop pile

Thickness Approx 10 mm

Finish No Carving

Edge Finish Overlocked

Use Purpose Indoor

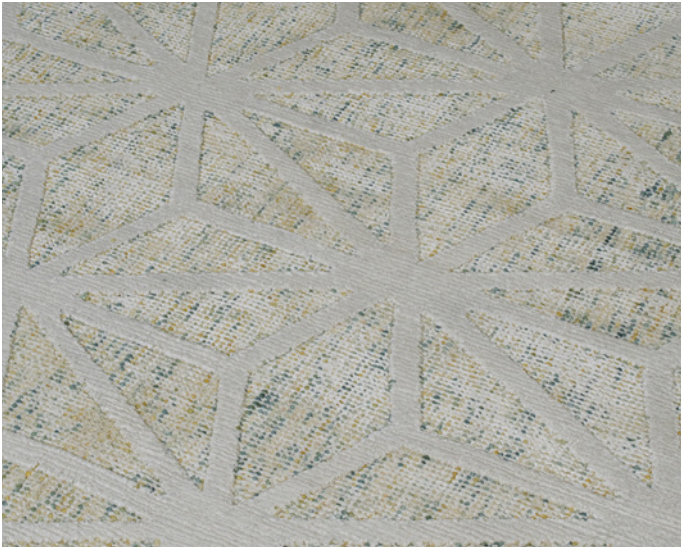
Suitability Residential

[VIEW PRICING](#)

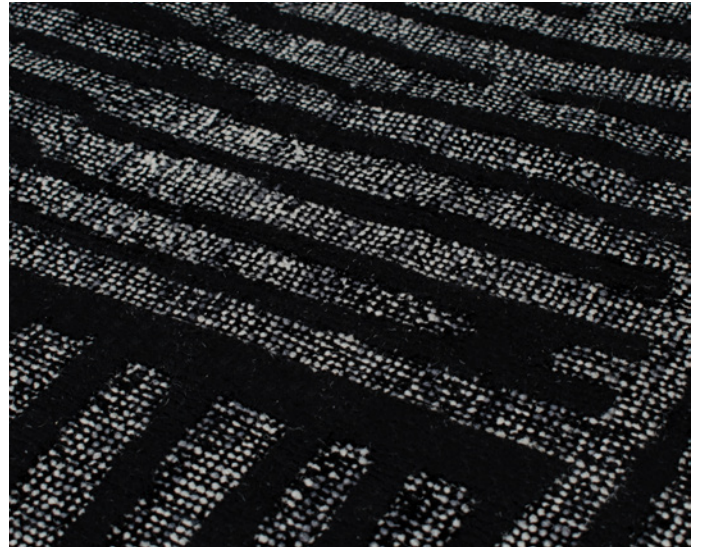
[Log in](#) or [Request a Trade Account](#)



[Visit A Showroom](#)



Autumn



Black



Candy



Ivory

RUG CARE

IMPORTANT

Use a flat head when vacuuming. To prevent excess fuzzing, do not use a brush head or turn brush setting off. Vacuum regularly. Clean spills immediately. Never rub a spill, instead blot any liquids with a dry absorbent white cloth or paper towel. Some stains may be cleaned with a mild clear detergent and lukewarm water. If the stain cannot be removed, seek specialist advice. Do not machine wash.

MANUFACTURING VARIATIONS

All rugs are made by hand which means there is a slight chance that variations in size and colour can occur. Up to 5% variation in size and colour is considered acceptable. Variations in pile height and total thickness of 1-2 mm are considered acceptable.

PRODUCT CHARACTERISTICS

SHEDDING

Often new rugs begin to produce fluff as a result of loose fibres that remain in the rug after the manufacturing process. Vacuum regularly and this will reduce over time.

SPROUTING

Occasionally loose yarn ends will rise above the pile surface. This is a characteristic of this particular weave. Strands can be safely trimmed to the surface when this occurs with a pair of sharp scissors.

SHADING

All cut pile rugs are susceptible to exhibit characteristics of shading over time. This is the result of the reversal of pile direction during use causing areas of the rug to appear to have changed colour. This effect is not a manufacturing fault nor can it be prevented.

GET IN TOUCH

SHOWROOM LOCATIONS

MELBOURNE
(03) 9421 5133

SYDNEY
(02) 8338 0107



VISIT US

HEAD OFFICE

(03) 8555 3584

4/80 Fairbank Road
Clayton South VIC
Australia 3169

EMAIL

sales@therugcollection.com.au

ONLINE

therugcollection.com.au
tallira.com.au

