

# RUBICK

WOOL FLATWEAVE



THE **RUG**  
COLLECTION  
AUSTRALIA

tallira  
FURNITURE



## RUBICK RUG

in Blue / Ivory



Blue / Ivory

### Stock Sizes (cm)

160 X 230 / 200 X 290 / 250 X 350 / 300 X 400

**Construction** Flatweave

**Composition** 100% Wool

**Custom Options** Available

**Thickness** Approx 10 mm

**Edge Finish** Overlocked / Hemmed edge

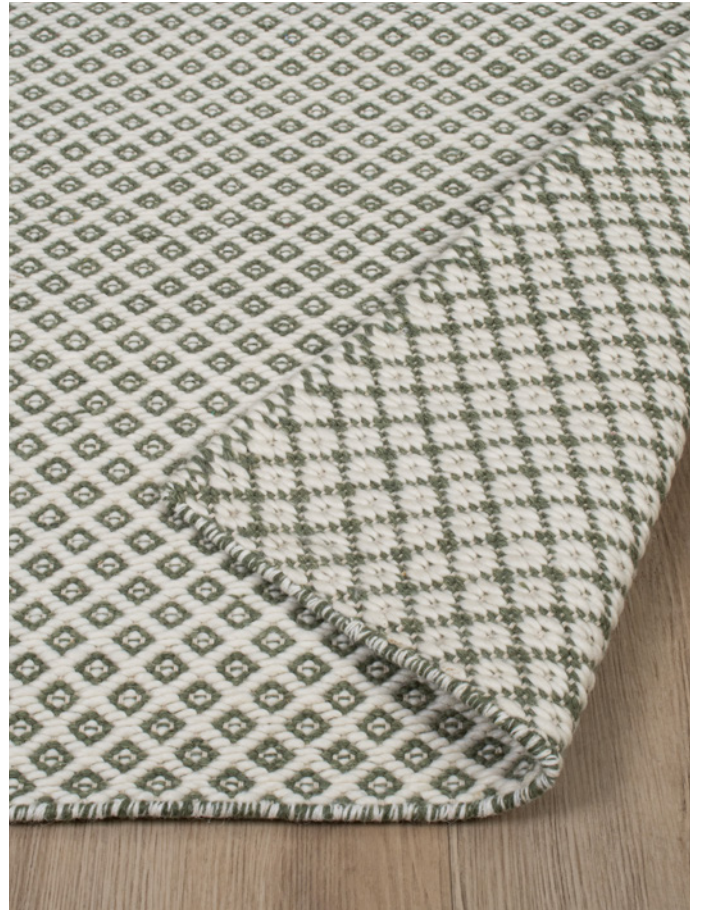
**Use Purpose** Indoor

**Suitability** Residential

[VIEW PRICING](#)

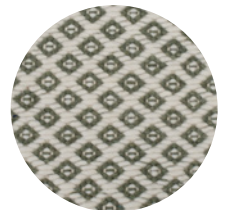
[Log in](#) or [Request a Trade Account](#)





## RUBICK RUG

in Green / Ivory



Green / Ivory

### Stock Sizes (cm)

160 X 230 / 200 X 290 / 250 X 350 / 300 X 400

**Construction** Flatweave

**Composition** 100% Wool

**Custom Options** Available

**Thickness** Approx 10 mm

**Edge Finish** Overlocked / Hemmed edge

**Use Purpose** Indoor

**Suitability** Residential

[VIEW PRICING](#)

[Log in or Request a Trade Account](#)





## RUBICK RUG

in Honey / Ivory



Honey / Ivory

### Stock Sizes (cm)

160 X 230 / 200 X 290 / 250 X 350 / 300 X 400

**Construction** Flatweave

**Composition** 100% Wool

**Custom Options** Available

**Thickness** Approx 10 mm

**Edge Finish** Overlocked / Hemmed edge

**Use Purpose** Indoor

**Suitability** Residential

[VIEW PRICING](#)

[Log in or Request a Trade Account](#)





## RUBICK RUG

in Rust / Ivory



Rust / Ivory

### Stock Sizes (cm)

160 X 230 / 200 X 290 / 250 X 350 / 300 X 400

**Construction** Flatweave

**Composition** 100% Wool

**Custom Options** Available

**Thickness** Approx 10 mm

**Edge Finish** Overlocked / Hemmed edge

**Use Purpose** Indoor

**Suitability** Residential

[VIEW PRICING](#)

[Log in](#) or [Request a Trade Account](#)





Blue / Ivory



Green / Ivory



Honey / Ivory



Rust / Ivory

## FLATWEAVE RUG CARE

### IMPORTANT

Use a flat head when vacuuming. To prevent excess fuzzing, do not use a brush head or turn brush setting off. Vacuum regularly. Clean spills immediately. Never rub a spill, instead blot any liquids with a dry absorbent white cloth or paper towel. Some stains may be cleaned with a mild clear detergent and lukewarm water. If the stain cannot be removed, seek specialist advice. Do not machine wash.

### MANUFACTURING VARIATIONS

All rugs are made by hand which means there is a slight chance that variations in size and colour can occur. Up to 5% variation in size and colour is considered acceptable. Variations in pile height and total thickness of 1-2 mm are considered acceptable.

## PRODUCT CHARACTERISTICS

### SHEDDING

Often new rugs begin to produce fluff as a result of loose fibres that remain in the rug after the manufacturing process. Vacuum regularly and this will reduce over time.

### SPROUTING

Occasionally loose yarn ends will rise above the pile surface. This is a characteristic of this particular weave. Strands can be safely trimmed to the surface when this occurs with a pair of sharp scissors.

## GET IN TOUCH

---

### SHOWROOM LOCATIONS

#### MELBOURNE

(03) 9421 5133

935 High Street  
Armadale VIC  
Australia 3143

#### SYDNEY

(02) 8338 0107

62-66 Mentmore Ave  
Rosebery NSW  
Australia 2018

---

### HEAD OFFICE

(03) 8555 3584

4/80 Fairbank Road  
Clayton South VIC  
Australia 3169

---

### EMAIL

[sales@therugcollection.com.au](mailto:sales@therugcollection.com.au)