

BRAID BOX

WOOL FLATWEAVE



THE **RUG**
COLLECTION
AUSTRALIA

tallira
FURNITURE



BRAID BOX RUG

in Natural



Natural

Stock Sizes (cm)

160 X 230 / 200 X 290 / 250 X 350 / 300 X 400

Construction Flatweave

Composition 100% Wool

Custom Options Available

Thickness Approx 10 mm

Edge Finish Overlocked / Hemmed edge

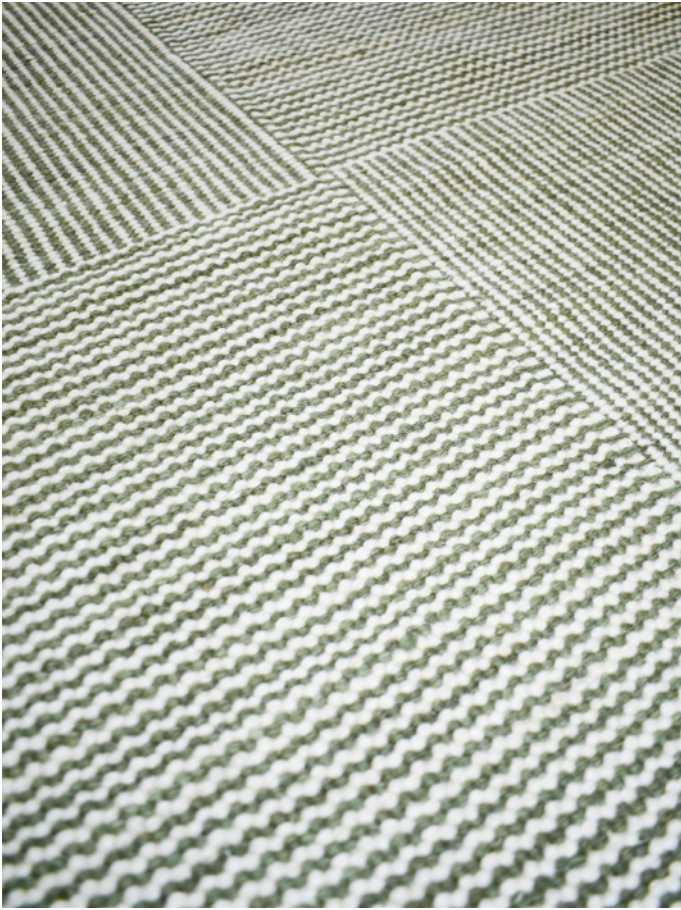
Use Purpose Indoor

Suitability Residential

[VIEW PRICING](#)

[Log in](#) or [Request a Trade Account](#)





BRAID BOX RUG

in Sage



Sage

Stock Sizes (cm)

160 X 230 / 200 X 290 / 250 X 350 / 300 X 400

Construction Flatweave

Composition 100% Wool

Custom Options Available

Thickness Approx 10 mm

Edge Finish Overlocked / Hemmed edge

Use Purpose Indoor

Suitability Residential

[VIEW PRICING](#)

[Log in or Request a Trade Account](#)





BRAID BOX RUG

in Walnut



Walnut

Stock Sizes (cm)

160 X 230 / 200 X 290 / 250 X 350 / 300 X 400

Construction Flatweave

Composition 100% Wool

Custom Options Available

Thickness Approx 10 mm

Edge Finish Overlocked / Hemmed edge

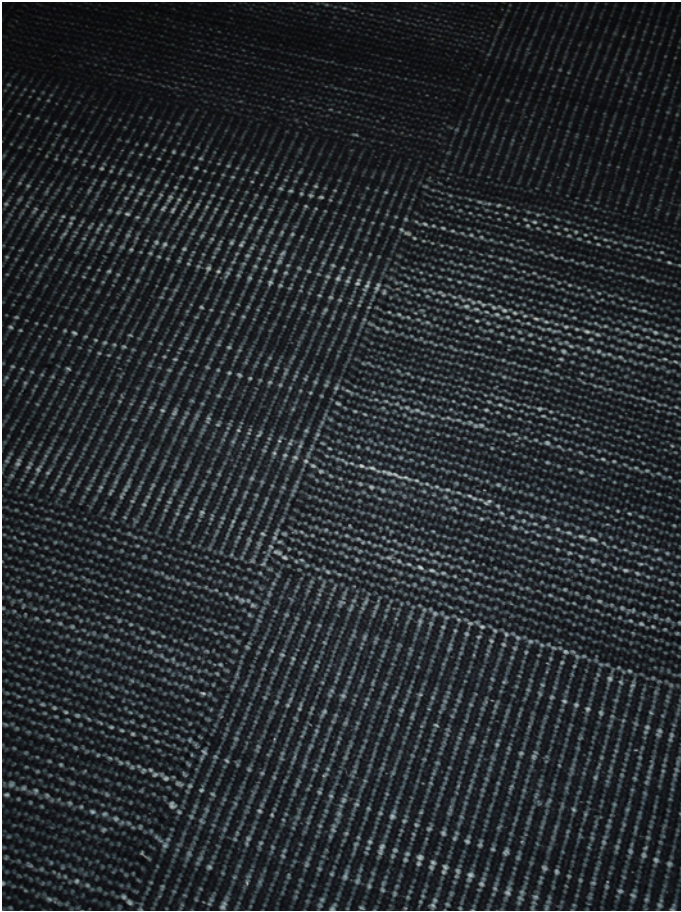
Use Purpose Indoor

Suitability Residential

[VIEW PRICING](#)

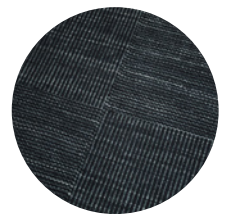
[Log in or Request a Trade Account](#)





BRAID BOX RUG

in Abyss



Abyss

Stock Sizes (cm)
200 X 290

Construction Flatweave
Composition 100% Wool
Custom Options Available
Thickness Approx 10 mm
Edge Finish Overlocked / Hemmed edge
Use Purpose Indoor
Suitability Residential

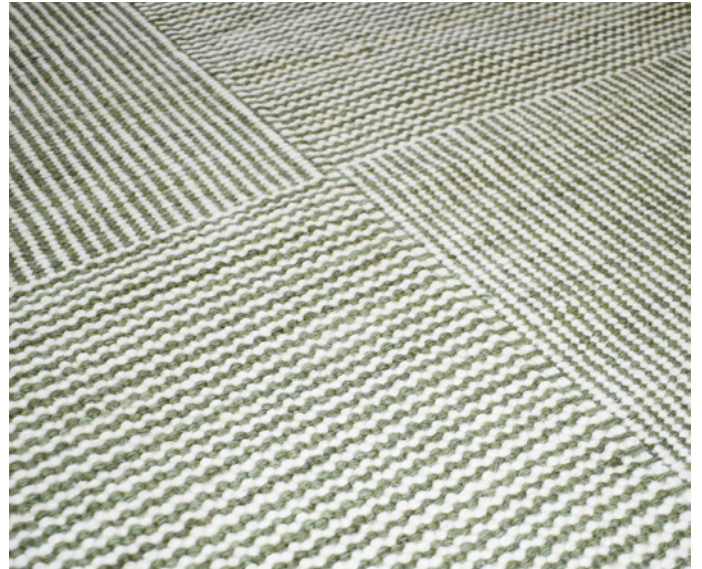
[VIEW PRICING](#)

[Log in or Request a Trade Account](#)

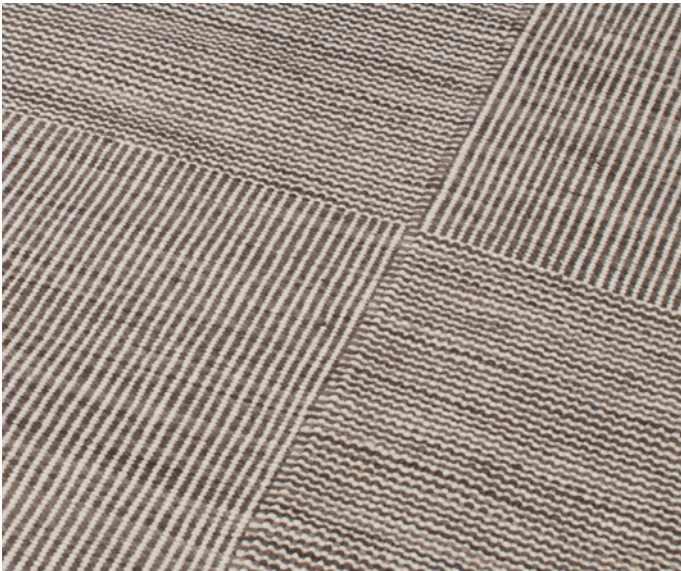




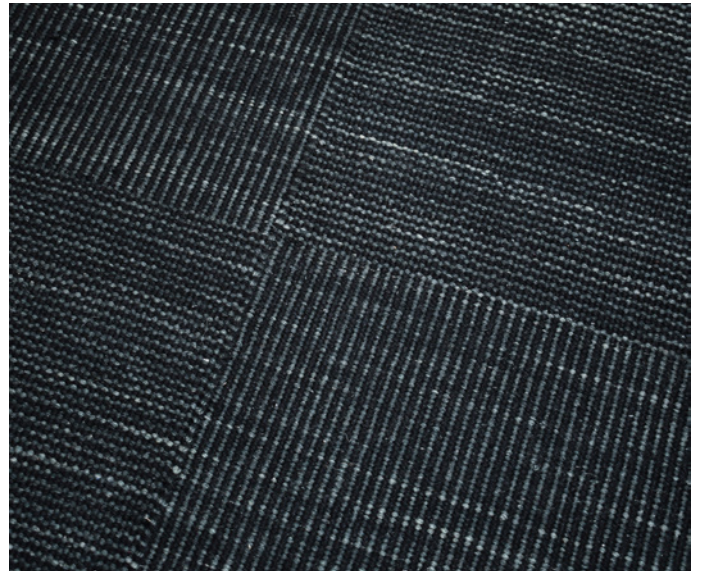
Natural



Sage



Walnut



Abyss

FLATWEAVE RUG CARE

IMPORTANT

Use a flat head when vacuuming. To prevent excess fuzzing, do not use a brush head or turn brush setting off. Vacuum regularly. Clean spills immediately. Never rub a spill, instead blot any liquids with a dry absorbent white cloth or paper towel. Some stains may be cleaned with a mild clear detergent and lukewarm water. If the stain cannot be removed, seek specialist advice. Do not machine wash.

MANUFACTURING VARIATIONS

All rugs are made by hand which means there is a slight chance that variations in size and colour can occur. Up to 5% variation in size and colour is considered acceptable. Variations in pile height and total thickness of 1-2 mm are considered acceptable.

PRODUCT CHARACTERISTICS

SHEDDING

Often new rugs begin to produce fluff as a result of loose fibres that remain in the rug after the manufacturing process. Vacuum regularly and this will reduce over time.

SPROUTING

Occasionally loose yarn ends will rise above the pile surface. This is a characteristic of this particular weave. Strands can be safely trimmed to the surface when this occurs with a pair of sharp scissors.

GET IN TOUCH

SHOWROOM LOCATIONS

MELBOURNE

(03) 9421 5133

935 High Street
Armadale VIC
Australia 3143

SYDNEY

(02) 8338 0107

62-66 Mentmore Ave
Rosebery NSW
Australia 2018

HEAD OFFICE

(03) 8555 3584

4/80 Fairbank Road
Clayton South VIC
Australia 3169

EMAIL

sales@therugcollection.com.au