

# CALYPSO

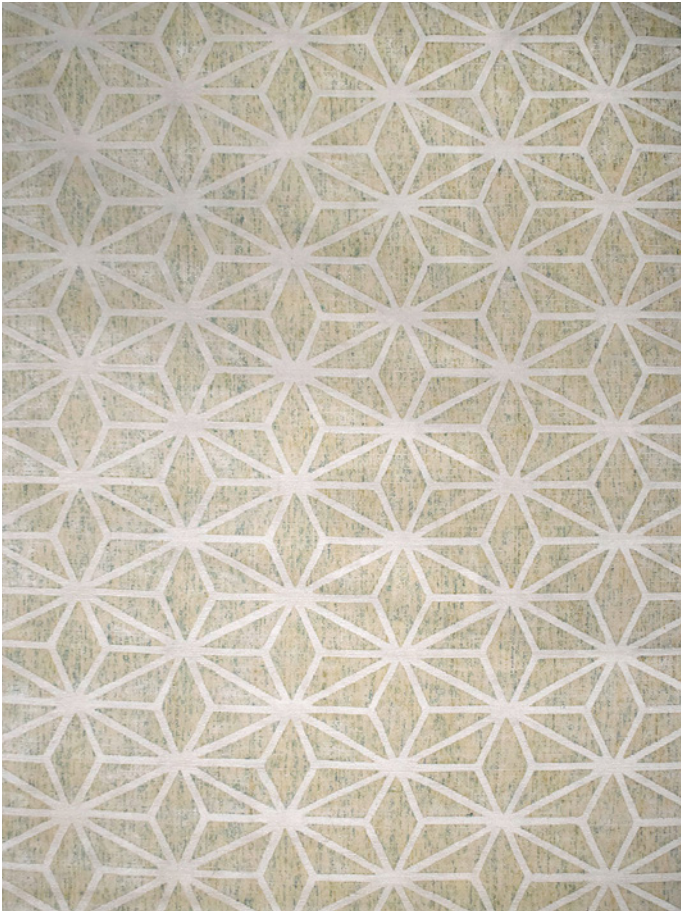
HANDWOVEN WOOL & ARTSILK



THE **RUG**  
COLLECTION  
AUSTRALIA

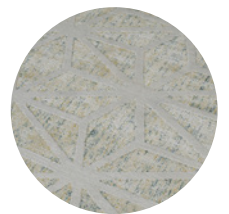
tallira  
FURNITURE





## CALYPSO RUG

in Autumn



Autumn

### Stock Sizes (cm)

200 X 290 / 250 X 350 / 300 X 400

**Construction** Handwoven

**Composition** Wool & Artsilk

**Custom Options** No

**Pile Type** Cut & loop pile

**Thickness** Approx 10 mm

**Finish** No Carving

**Edge Finish** Overlocked

**Use Purpose** Indoor

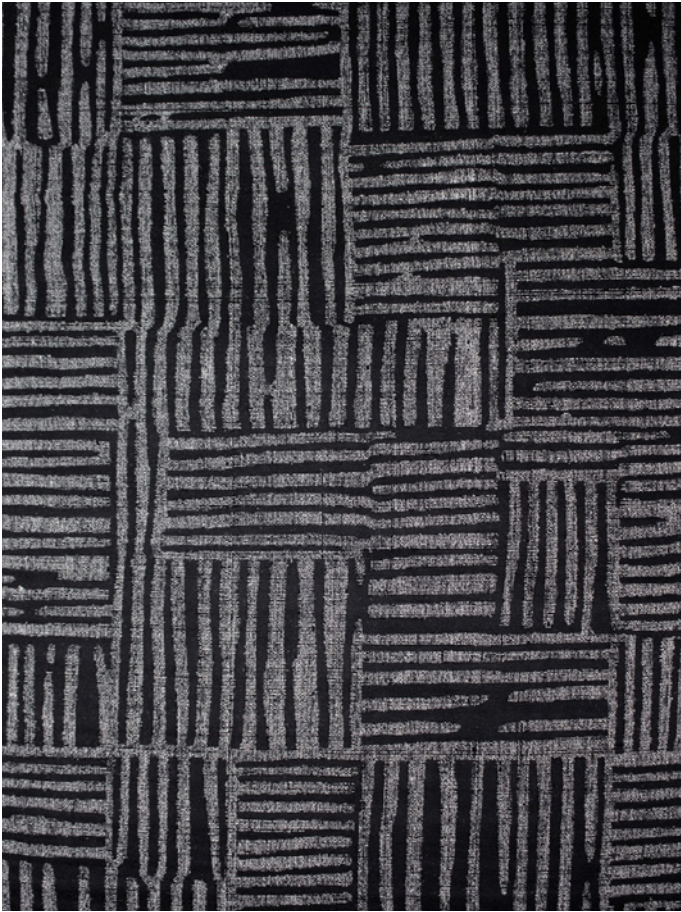
**Suitability** Residential

[VIEW PRICING](#)

[Log in](#) or [Request a Trade Account](#)

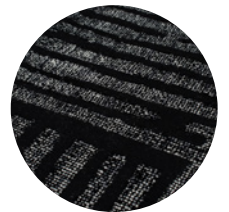






## CALYPSO RUG

in Black



Black

### Stock Sizes (cm)

200 X 290 / 250 X 350 / 300 X 400

**Construction** Handwoven

**Composition** Wool & Artsilk

**Custom Options** No

**Pile Type** Cut & loop pile

**Thickness** Approx 10 mm

**Finish** No Carving

**Edge Finish** Overlocked

**Use Purpose** Indoor

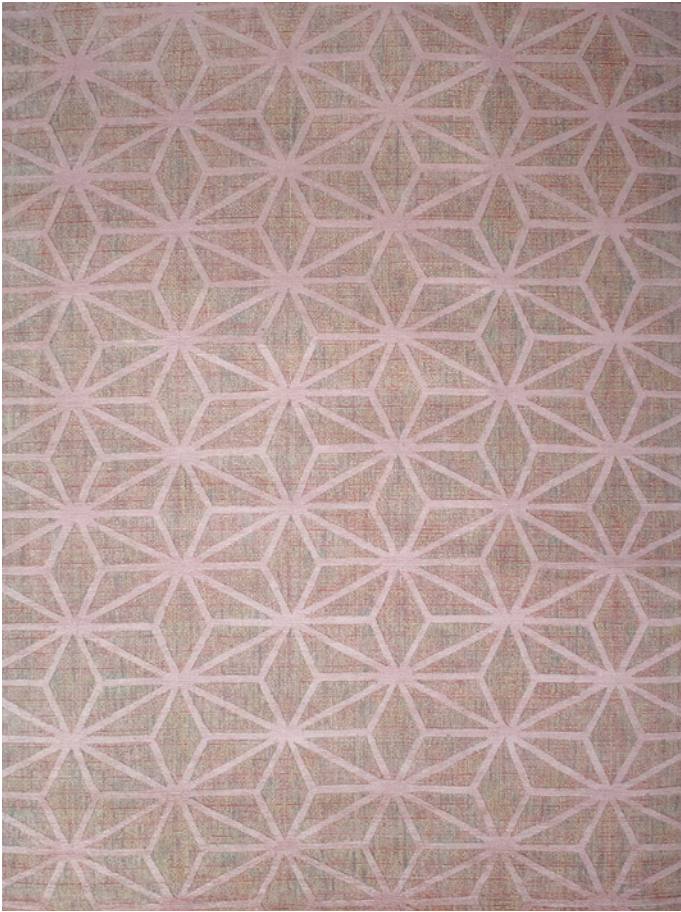
**Suitability** Residential

[VIEW PRICING](#)

[Log in](#) or [Request a Trade Account](#)







## CALYPSO RUG

in Candy



Candy

### Stock Sizes (cm)

200 X 290 / 250 X 350 / 300 X 400

**Construction** Handwoven

**Composition** Wool & Artsilk

**Custom Options** No

**Pile Type** Cut & loop pile

**Thickness** Approx 10 mm

**Finish** No Carving

**Edge Finish** Overlocked

**Use Purpose** Indoor

**Suitability** Residential

[VIEW PRICING](#)

[Log in or Request a Trade Account](#)







## CALYPSO RUG

in Ivory



Ivory

### Stock Sizes (cm)

200 X 290 / 250 X 350 / 300 X 400

**Construction** Handwoven

**Composition** Wool & Artsilk

**Custom Options** No

**Pile Type** Cut & loop pile

**Thickness** Approx 10 mm

**Finish** No Carving

**Edge Finish** Overlocked

**Use Purpose** Indoor

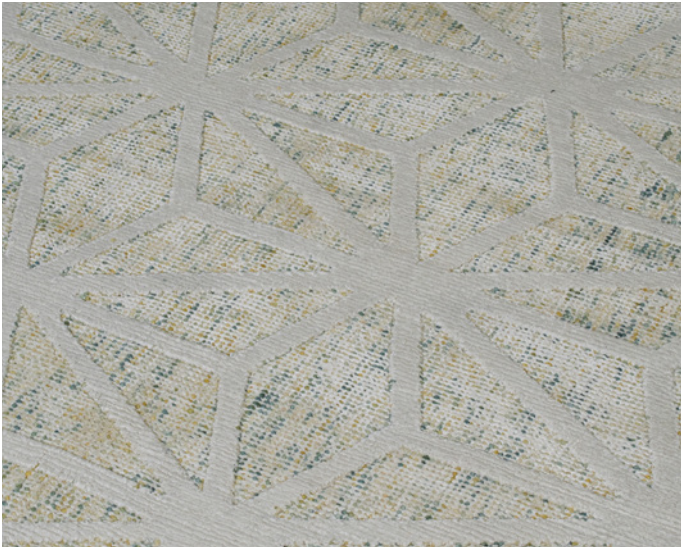
**Suitability** Residential

[VIEW PRICING](#)

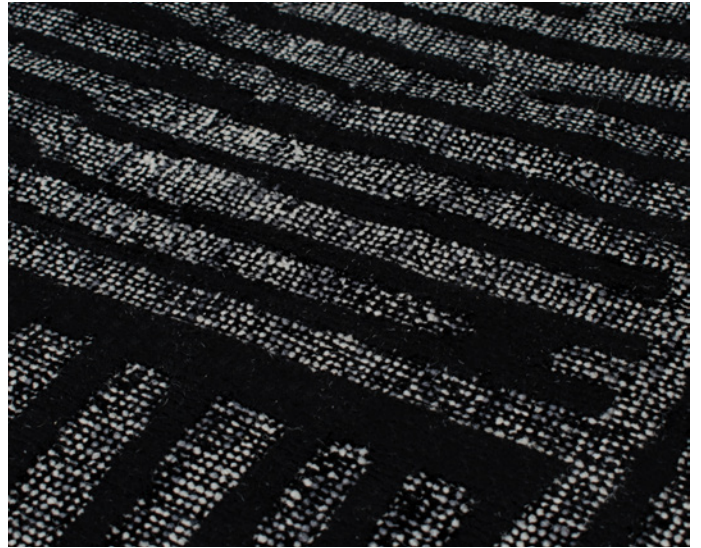
[Log in](#) or [Request a Trade Account](#)







Autumn



Black



Candy



Ivory

## RUG CARE

### IMPORTANT

Use a flat head when vacuuming. To prevent excess fuzzing, do not use a brush head or turn brush setting off. Vacuum regularly. Clean spills immediately. Never rub a spill, instead blot any liquids with a dry absorbent white cloth or paper towel. Some stains may be cleaned with a mild clear detergent and lukewarm water. If the stain cannot be removed, seek specialist advice. Do not machine wash.

### MANUFACTURING VARIATIONS

All rugs are made by hand which means there is a slight chance that variations in size and colour can occur. Up to 5% variation in size and colour is considered acceptable. Variations in pile height and total thickness of 1-2 mm are considered acceptable.

## PRODUCT CHARACTERISTICS

### SHEDDING

Often new rugs begin to produce fluff as a result of loose fibres that remain in the rug after the manufacturing process. Vacuum regularly and this will reduce over time.

### SPROUTING

Occasionally loose yarn ends will rise above the pile surface. This is a characteristic of this particular weave. Strands can be safely trimmed to the surface when this occurs with a pair of sharp scissors.

### SHADING

All cut pile rugs are susceptible to exhibit characteristics of shading over time. This is the result of the reversal of pile direction during use causing areas of the rug to appear to have changed colour. This effect is not a manufacturing fault nor can it be prevented.

## GET IN TOUCH

---

### SHOWROOM LOCATIONS

#### MELBOURNE

(03) 9421 5133

935 High Street  
Armadale VIC  
Australia 3143

#### SYDNEY

(02) 8338 0107

62-66 Mentmore Ave  
Rosebery NSW  
Australia 2018

---

### HEAD OFFICE

(03) 8555 3584

4/80 Fairbank Road  
Clayton South VIC  
Australia 3169

---

### EMAIL

[sales@therugcollection.com.au](mailto:sales@therugcollection.com.au)