

COLLECTION

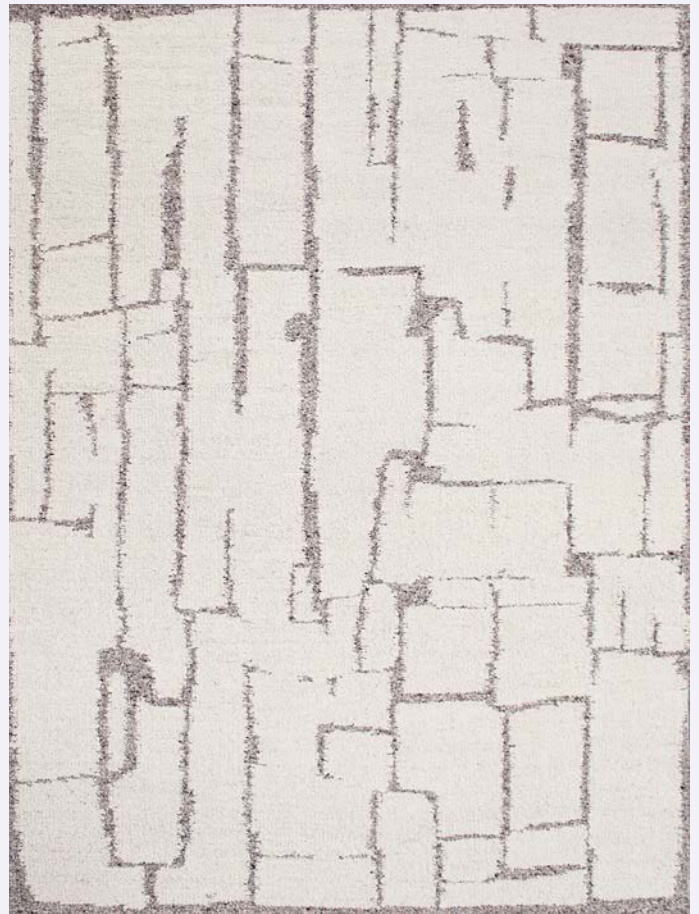
HERAS RUGS  
HANDWOVEN  
WOOL

THE **RUG**  
COLLECTION  
AUSTRALIA

**tallira**  
FURNITURE



VIEW ONLINE



## HERAS RUGS

COLOUR: IVORY/TAUPE

**Stock Sizes (cm)**  
200 X 290 / 250 X 350 / 300 X 400

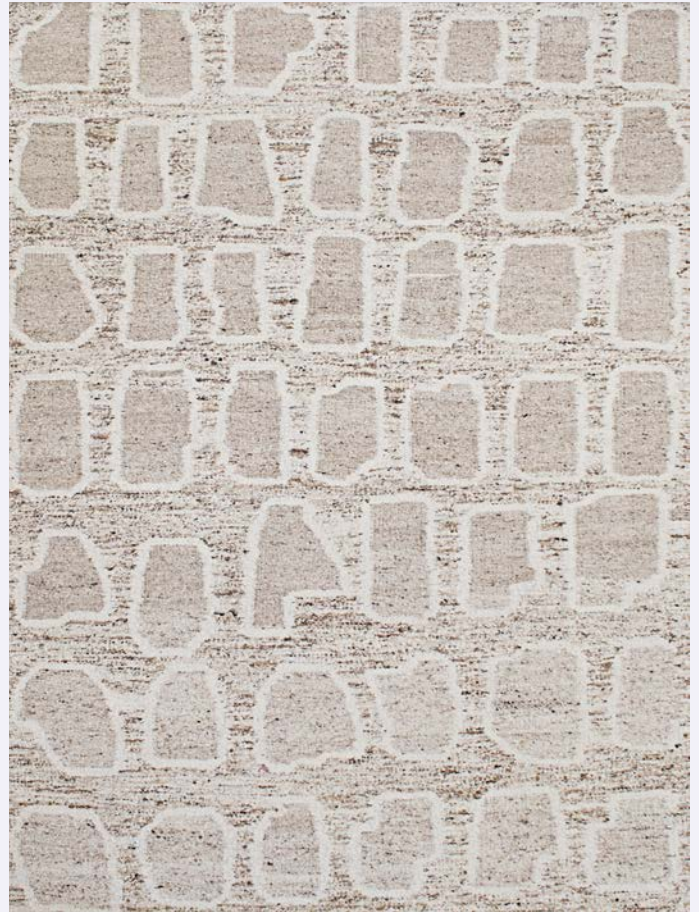
**Construction** Handwoven  
**Composition** 100% Wool  
**Custom Options** N/A  
**Thickness** Approx 12 mm  
**Edge Finish** Overlocked  
**Use Purpose** Indoor  
**Suitability** Residential



Ivory / Taupe

[VIEW PRICING](#)

[Log in](#) or [Request a Trade Account](#)



## HERAS RUGS

COLOUR: SAND



Sand

**Stock Sizes (cm)**  
200 X 290 / 250 X 350 / 300 X 400

**Construction** Handwoven

**Composition** 100% Wool

**Custom Options** N/A

**Thickness** Approx 12 mm

**Edge Finish** Overlocked

**Use Purpose** Indoor

**Suitability** Residential

[VIEW PRICING](#)

[Log in](#) or [Request a Trade Account](#)



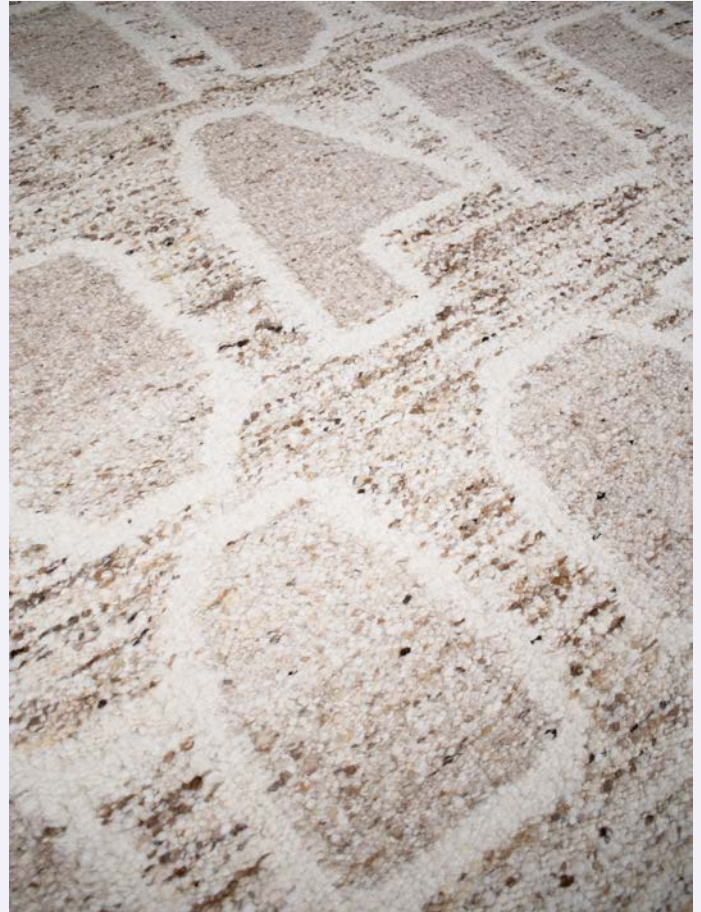
# HERAS RUG

HANDWOVEN WOOL

**tallira**  
by THE RUG COLLECTION



Ivory / Taupe



Sand

## HANDWOVEN PILE RUG CARE

### IMPORTANT

Use a flat head when vacuuming. To prevent excess fuzzing, do not use a brush head or turn brush setting off. Vacuum regularly. Clean spills immediately. Never rub a spill, instead blot any liquids with a dry absorbent white cloth or paper towel. Some stains may be cleaned with a mild clear detergent and lukewarm water. If the stain cannot be removed, seek specialist advice. Do not machine wash.

### MANUFACTURING VARIATIONS

All rugs are made by hand which means there is a slight chance that variations in size and colour can occur. Up to 5% variation in size and colour is considered acceptable. Variations in pile height and total thickness of 1-2 mm are considered acceptable.

## PRODUCT CHARACTERISTICS

### SHEDDING

Often new rugs begin to produce fluff as a result of loose fibres that remain in the rug after the manufacturing process. Vacuum regularly and this will reduce over time.

### SPROUTING

Occasionally loose yarn ends will rise above the pile surface. This is a characteristic of this particular weave. Strands can be safely trimmed to the surface when this occurs with a pair of sharp scissors.

## GET IN TOUCH

---

### SHOWROOM LOCATIONS

MELBOURNE  
(03) 9421 5133

SYDNEY  
(02) 8338 0107



VISIT US

---

### HEAD OFFICE

(03) 8555 3584

4/80 Fairbank Road  
Clayton South VIC  
Australia 3169

---

### EMAIL

[sales@therugcollection.com.au](mailto:sales@therugcollection.com.au)

---

### ONLINE

[therugcollection.com.au](http://therugcollection.com.au)  
[tallira.com.au](http://tallira.com.au)

